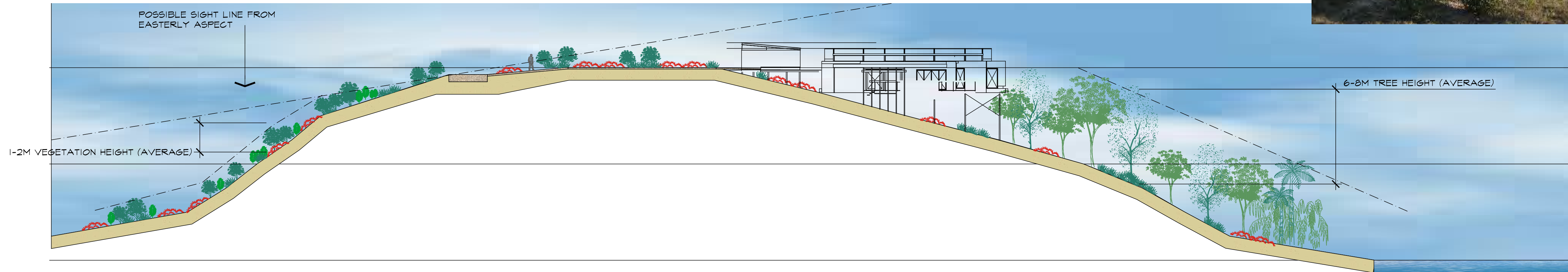


DISCUSSION ONLY

NOTE: ACCESS TO VILLAS IS VIA A PUBLIC ACCESS WAY WITH INDIVIDUAL CROSSOVERS LEADING TO CONTOURED (LOW PROFILE) PRIVATE DRIVENAYS TO EACH (OR A CLUSTER OF) VILLAS. A SINGLE AND SHARED PUBLIC ACCESS WAY ALONG THE HEADLAND IS PREFERRED FOR VISUAL & ENVIRONMENTAL IMPACT REASONS

VILLAS WILL BE VISIBLE FROM LOWER SMALL BEACH & WITHIN A SMALL VISUAL BOWL FROM THE DISTANT (800M-1KM) BEACHES



SECTION C
1:250 AT A1



COMPARATIVE PHOTO MONTAGE- ACTUAL SITE PHOTO & ARTIST'S IMPRESSION OF DWELLINGS SET WITHIN TREED LANDSCAPE

TURTLE STREET BEACH RESORT
CURTIS ISLAND
CLIENT: QRE PTY LTD
PROJECT NO: 100807.40
PLANS IN SERIES: 4 OF 6
DATE: SEPT. 2010

